



Rural Connectivity Group

25 January 2017 – Kaipara District Council

NZ Rural Broadband & Rural Mobile Services

- Government developed rural telecommunications strategy - policy and legislative changes and committed funding for RBI and UFB.
- Funding is sourced from an industry levy on all telco companies based on their customer base (the Telecommunications Development Levy).
- It has not been viable for one operator to provide services into the rural areas – which is why RBI 1 was developed
- The Government strategy is required to ensure rural and remote areas of New Zealand have access to fast broadband and mobile services.
- RBI 1 delivered ultra-fast broadband to 93% of rural schools and broadband services to 83% of rural households – 5 year programme completed June 2016. Mobile services were an added extra from the cellular solution provided. Rural residents love it!

RBI2 & Mobile Black Spot Funds

- RBI2 seeks to provide fast broadband to the greatest number of under-served rural homes and businesses within the funding available (70,000 households minimum).
- Ensures access to fast broadband for rural people across all regions of Aotearoa.
- The RBI2 solutions proposed include wireless point-to-point radio links (broadband via 9 different WISP's), and
- 4G-based cellular radio technology which provides both fixed wireless broadband and mobile coverage.
- The Mobile Black Spot Fund is providing greater mobile coverage on approximately 1,000 kilometres of State Highway and in over 100 tourism locations - where no coverage currently exists.

Why does RCG exist?



- The Rural Connectivity Group is a funded entity to build the 4G broadband and mobile infrastructure required under RBI2.
- We are partnering with CIP to enable more rural Kiwis to have access to critical mobile and wireless broadband services.
- The infrastructure we build will be shared by NZ's mobile network operators – Vodafone, Spark, 2degrees.
- CIP manage the funds provided by the RBI2 policy and the mobile network operators are also contributing capital.
- This unique funding model is the only way these modern services can be delivered further into rural NZ.
- Industry collaboration will see NZ as the first country in the world where all MNO's will share RAN and antenna on each tower.

What will RCG deliver?

- **Secure and build a minimum of 400 new sites with 4G
34,000 households covered**
- **Build a further 121 new 4G sites
6000 more households covered**
- **A wholesale backhaul & co-location service**
- **Operate and maintain the new network**
- **Finish the build programme by 2022 for \$225M**



We are focused on building as much infrastructure as possible, to take the services as far as possible.
Every cent counts!



RCG Progress

- We are getting established – total start up company.
- We are building a great team, highly experienced and motivated to deliver this ambitious programme.
- Working out our approach around a fast, flexible, high volume, low cost programme.
- Current RFP in the market for equipment supply and support, and build services.
- Commenced detailed work on specific sites.
- Engagement underway - we are keen to collaborate and work with all parties to ensure this funding builds as many sites as possible - communities, councils, Iwi, hapu, whanau, DoC, NZTA, land owners, businesses, our suppliers, the mobile network operators – we can all contribute to a successful outcome.

Proposed Kaipara DC Sites



Glinks Gully

Kaipara East

Marohemo

Whakapirau

Aranga

Omamari

Tinopai

Te Ruruku Bay

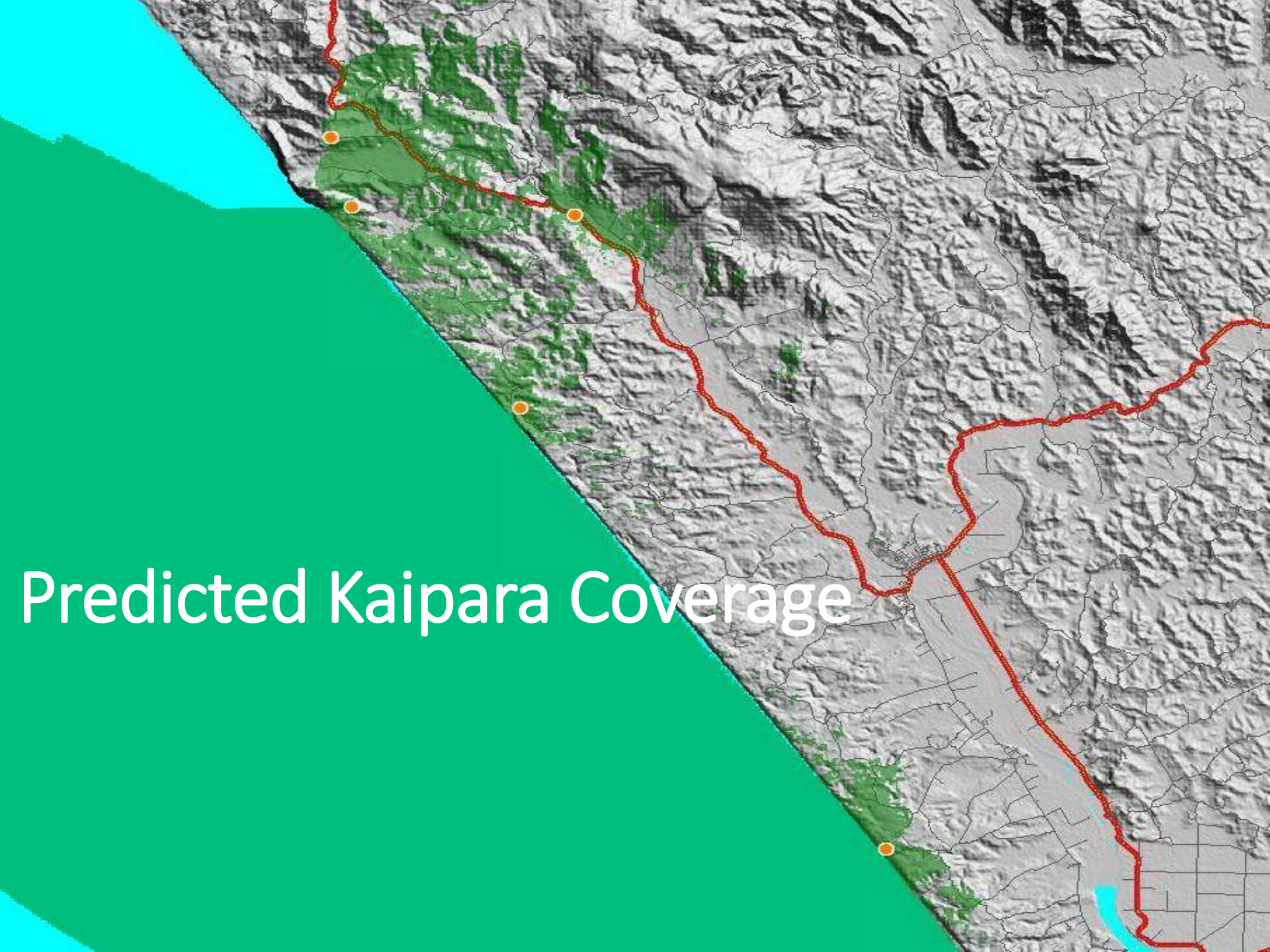
Kaihu

*Hakaru

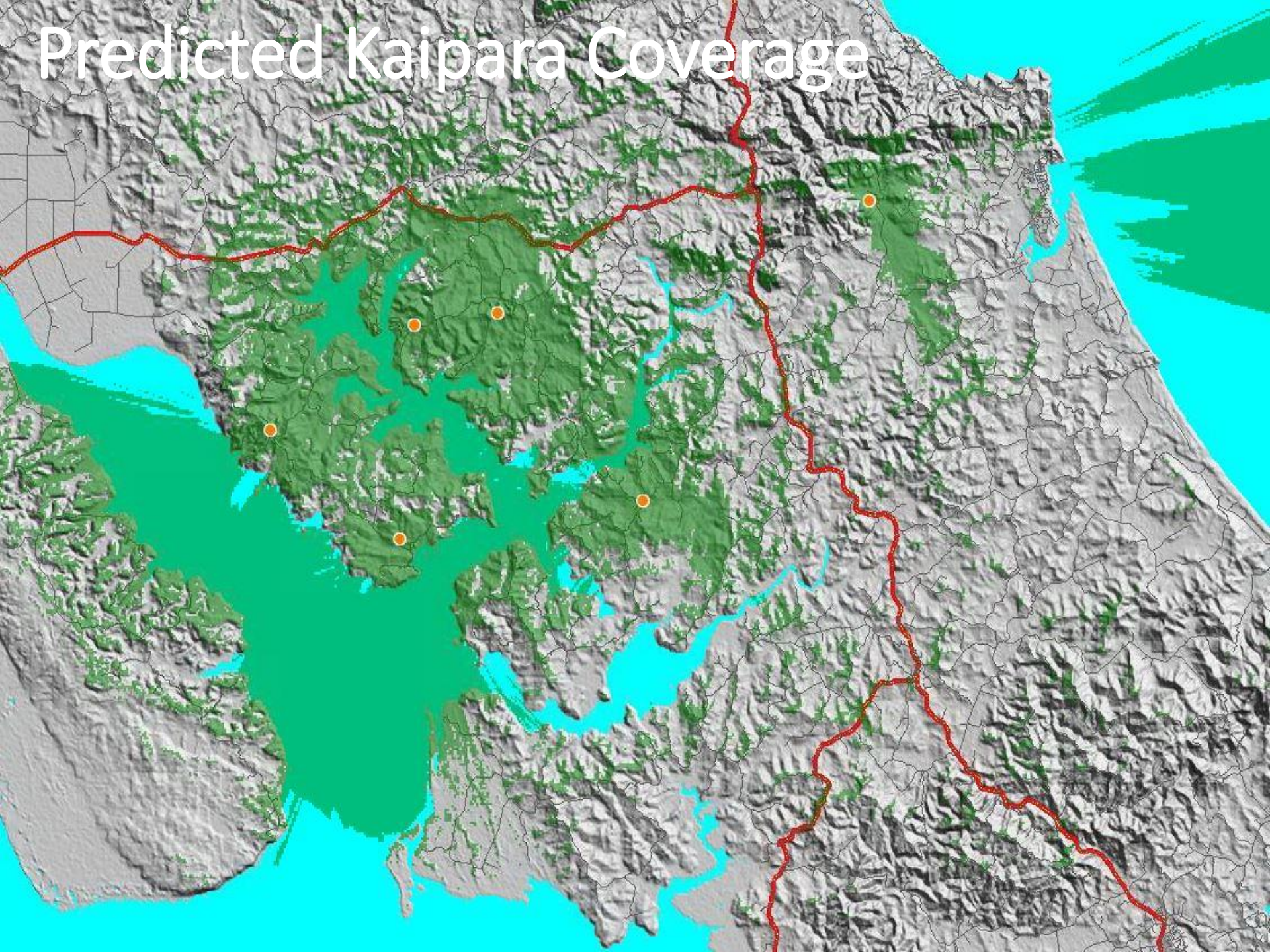
*Aranga Coast

* Stretch targets

Predicted Kaipara Coverage



Predicted Kaipara Coverage



Kia ora koutou – patai?

Caitlin Metz

Engagement Manager

Phone 021 033 1116

Caitlin.Metz@theRCG.nz